

THE MARINER 16 oil hydraulic lift

AUSSIE LIFTS

Builder's Information

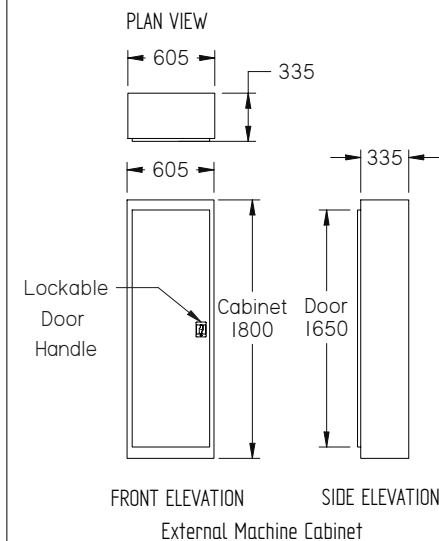
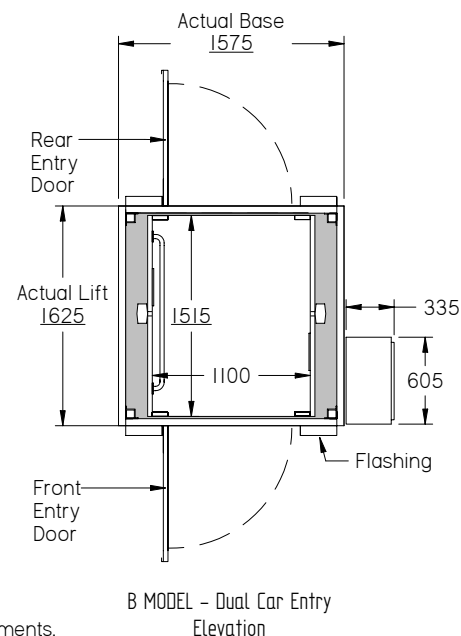
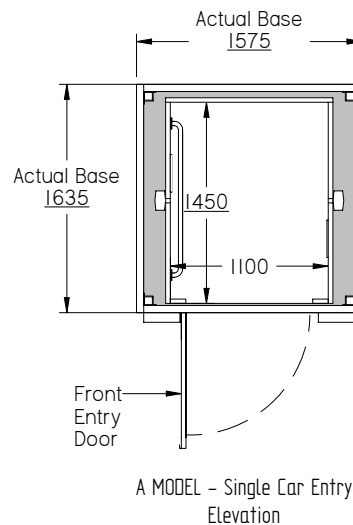
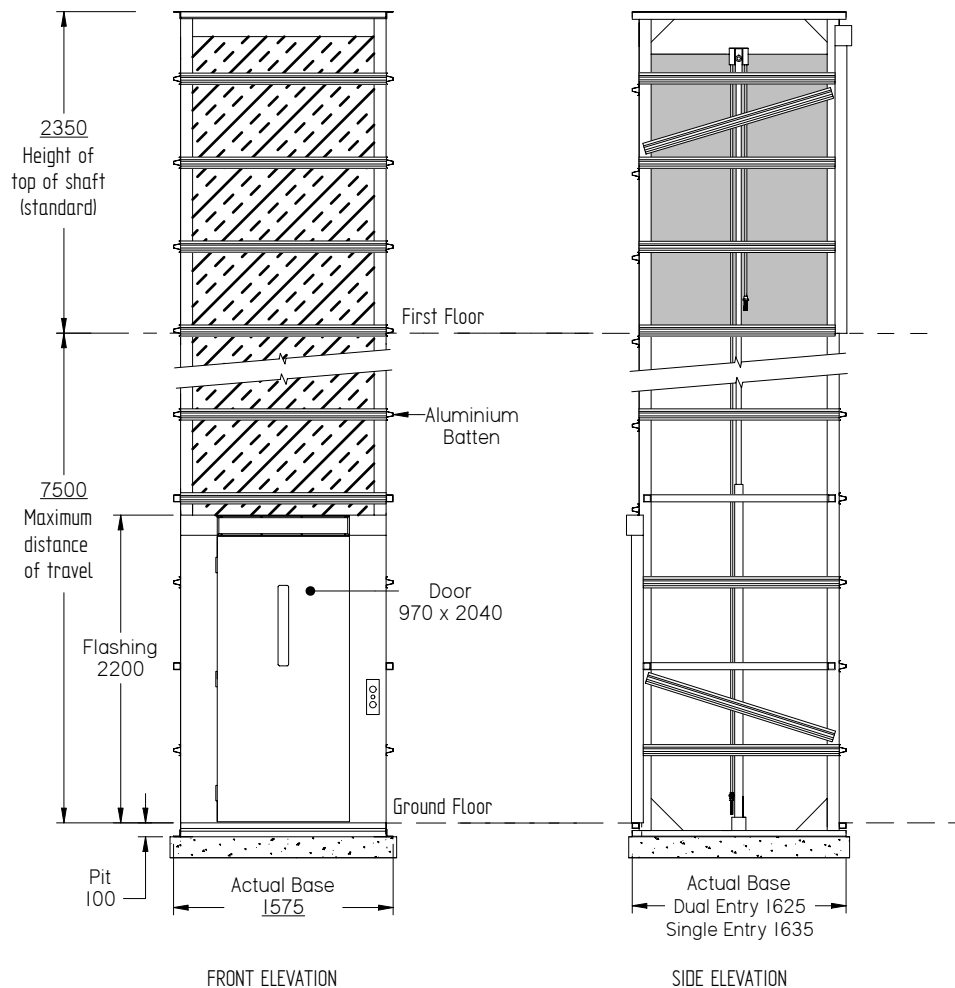
Supplied as a self supporting unit the lift requires no load bearing walls.

If selected, the aluminium battens on the lift can be set up to assist in cladding directly to the lifts tower.

Power requirements: Single Phase 240V 16amp.

Phone: Extension of home phone line

For technical details or confirmed slab & penetration measurements please contact one of our qualified Lift Consultant



PLEASE NOTE: No overhead height is required with this lift as the hydraulic cylinders are contained within the lift shaft. These are indicative drawings. Please speak to one of our friendly Lift Consultants for further information on lift requirements.

For confirmation of measurements, please contact your local Mariner 16 supplier. These dimensions and specifications are a guide only and must not be used for construction purposes.

DRW: 131025_307

CATEGORY: Oil Hyd Chain
LAST AUTHOR: Production

MARINER 16 oil hyd chain over commercial lift
Generic Drawing for BCA compliant lift

Single entry 1100mm x 1450mm x 2100mm
Dual entry 1100mm x 1515mm x 2100mm
Australian Standard 1735 part 16

DRAWN	Production	08/10/13	LAST MODIFIED: 25/10/2013
CHECKED	Toni Gregory		LAST PRINTED: 8/11/2013

SIZE: A3 SHEET 1 OF 1 Dimensions: mm (unless specified)