

THE PHOENIX 16 oil hydraulic lift



Builder's Information

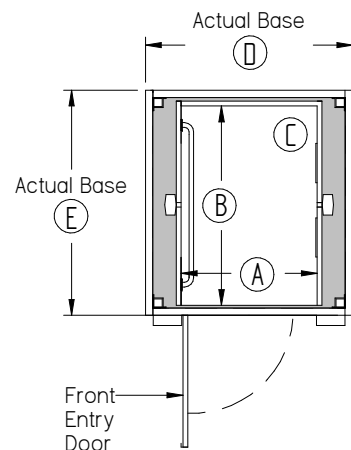
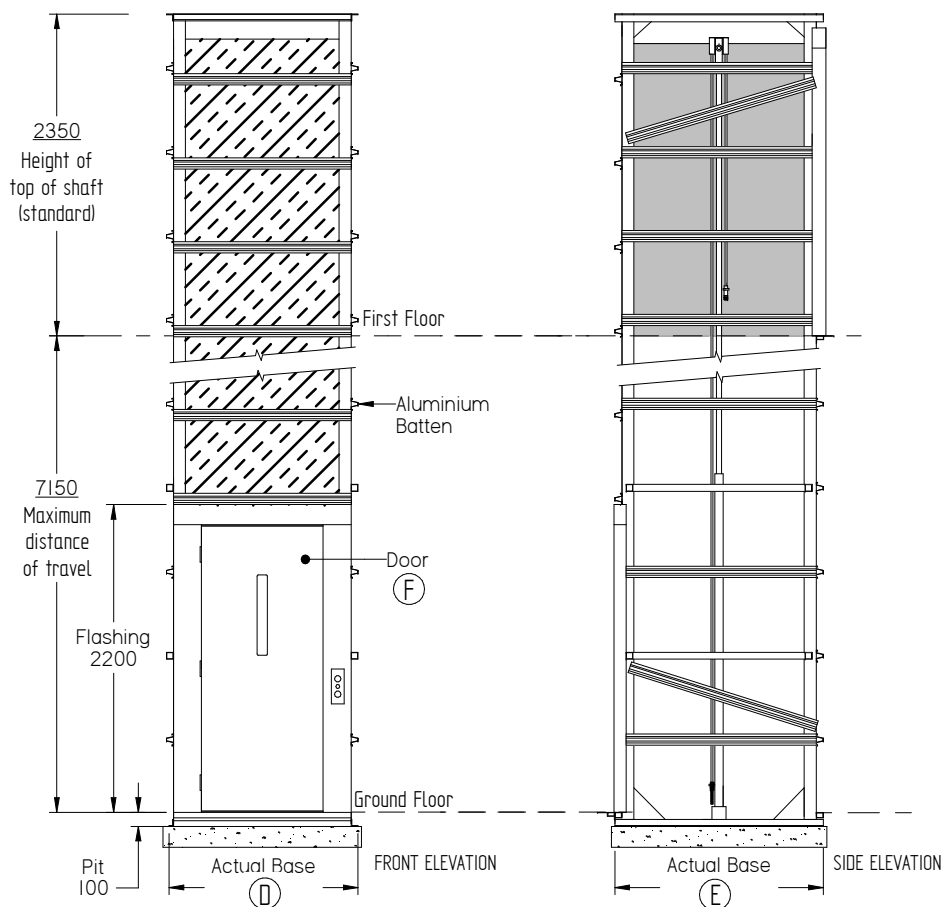
Supplied as a self supporting unit the lift requires no load bearing walls.

If selected, the aluminium battens on the lift can be set up to assist in cladding directly to the lifts tower.

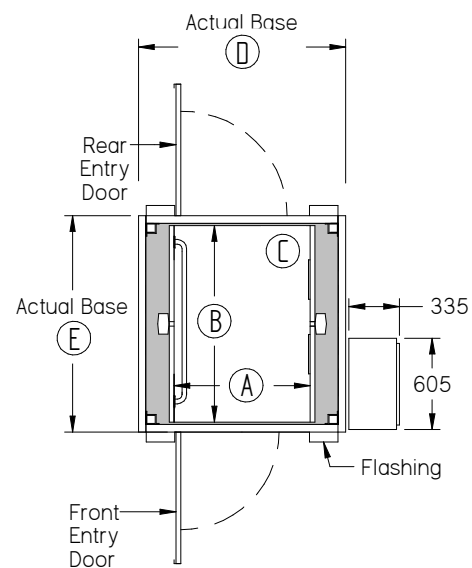
Power requirements: Single Phase 240V 20amp.

Phone: Extension of home phone line

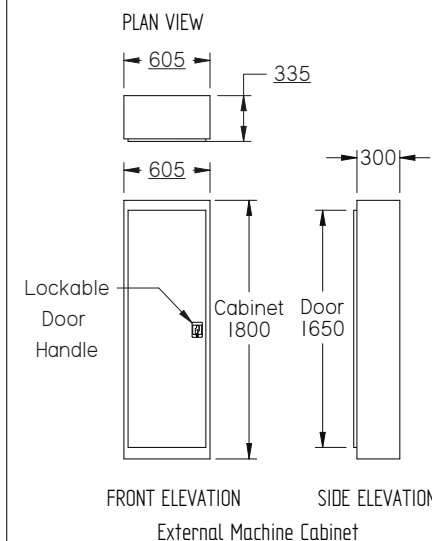
For technical details or confirmed slab & penetration measurements please contact one of our qualified Lift Consultant



A MODEL - Single Car Entry ELEVATION



B MODEL - Dual Car Entry ELEVATION



Lift Measurements						
Description	Car Width	Car Depth	Car Height	Shaft Width	Shaft Depth	Door Width
Key	A	B	C	D	E	F
Single Entry - Standard	900	1300	2100	1375	1495	920
Dual Entry - Standard	900	1300	2100	1375	1495	920
Single Entry - Deluxe	1100	1400	2100	1575	1595	920
Dual Entry - Deluxe	1100	1400	2100	1575	1595	920

PLEASE NOTE: No overhead height is required with this lift as the hydraulic cylinders are contained within the lift shaft. These are indicative drawings. Please speak to one of our friendly Lift Consultants for further information on lift requirements.

For confirmation of measurements, please contact your local Phoenix 16 supplier. These dimensions and specifications are a guide only and must not be used for construction purposes.

DRW: 180523_278

CATEGORY: Oil Hyd Chain
 LAST AUTHOR: marketing
 LAST MODIFIED: 23/05/2018
 LAST PRINTED: 23/05/2018

PHOENIX oil hyd chain over residential lift
 Generic Drawing
 SIZE: A3 SHEET 1 OF 1 Dimensions: mm (unless specified)

Option of
 900 x 1300 x 2100 lift car or
 1100 x 1400 x 2100 lift car
 Australian Standard 1735 part 16 & 18