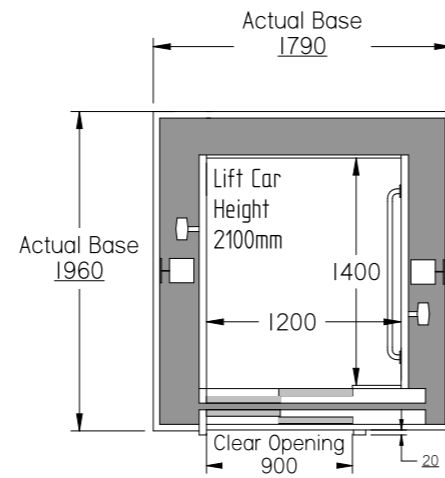
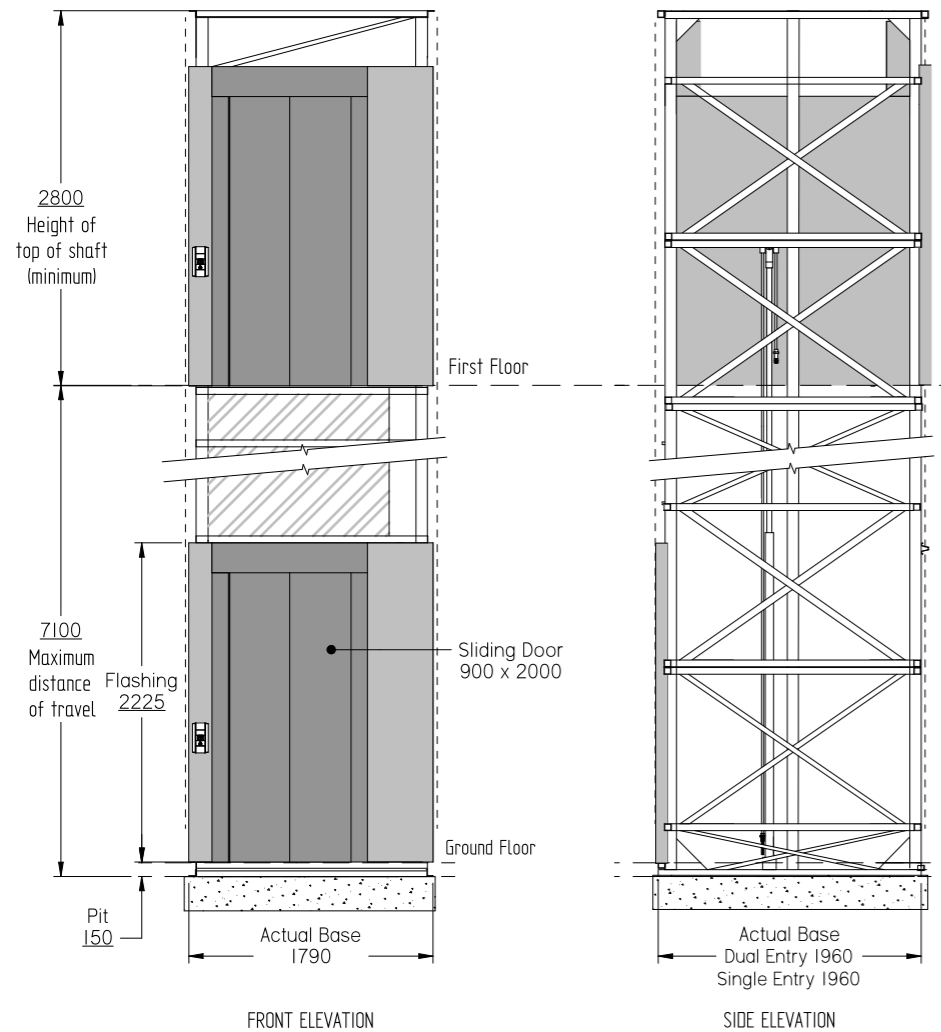
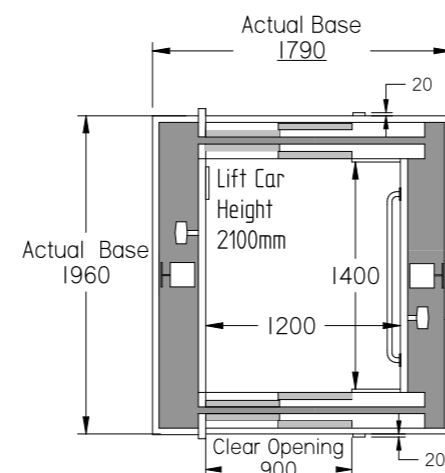


# THE ORION C350



A MODEL PLAN  
Single Entry Car



B MODEL PLAN  
Dual Entry Car



COMMERCIAL



DISABLED USE

# THE ORION C350

**NOT FOR CONSTRUCTION**

## MAIN SPECIFICATIONS

- Carrying Capacity:** 350kg
- Car Size:** Single & Dual Entry - 1200W x 1400D x 2100Hmm
- Door Size:** Clear opening of 900mm in width & 2000mm in height
- Maximum Travel:** Up to 7100mm
- Lift Speed:** Standard - Rated speed 0.30 m/sec with VF Drive
- Max No. of Stops:** 4 Stops
- Drive System:** Oil hydraulic chain over with indirect acting cylinders on each side of the lift car. 1:2 ratio
- Minimum Pit Depth:** 150mm
- Cylinder Extension:** Contained within lift tower
- Machine Cabinet:** 605W x 335D x 1800Hmm
- Controls:** Automatic operation & key isolation
- Standards:** Meets and exceeds requirements of the Australian Standards Lift code AS1735 Part 16 & BCA E3.3 & E3.6 compliant
- Usage:** Commercial
- Application:** External or internal
- Installation:** Crane in or dismantle
- Lift Tower:** Inclusive. Self supporting - no structural walls required. Cladding by others can be attached directly to the lift structure
- Supply Voltage:** 240volt. Single Phase. 32amp RCD protected

**Call Us - We're Here to Help**  
We have an unrivalled reputation for after-sales care and customer service. Call us and one of our friendly lift specialists will gladly answer all your questions.

Aussie Lifts Pty Ltd  
12 Achievement Crescent  
Acacia Ridge QLD 4110  
Tel (07) 3274 4211  
[info@aussielifts.com.au](mailto:info@aussielifts.com.au)  
[www.aussielifts.com.au](http://www.aussielifts.com.au)  
A.B.N # 90 618 522 277



Oil Hydraulic Chain Over Commercial Lift



REGISTERED PROVIDER



© 2011 by Aussie Lifts Pty Ltd. All Rights Reserved. This brochure is for information purposes only. Information may change without notice. All dimensions and specifications are a guide only and must NOT be used for construction purposes. All changes must be in compliance with the lift code and the manufacturer reserves the right to approve or refuse any changes.



**“The Orion C350 is the largest of all our lifts with a travel of up to 7.1 metres (4 levels). Perfect for schools, factories, organisations & government buildings. ”**

**B**uilt to Australian Standard 1735 part 16, the Orion C350 lift is BCA E3.6 compliant and is perfect for complying with the disable access regulations for commercial buildings, whether it be for a new or existing buildings.

Offering an alternative to the costly expense associated with providing load bearing walls, large slab footings and a machine room, the Orion C350 comes complete with it's own light-weight self supporting lift shaft, sliding landing doors and machine cabinet.

Capable of servicing up to four levels with a maximum travel of 7.1 metres, the Orion C350 is powered by an advanced chain-over oil hydraulic drive system that requires no over head space or structural support.

Requiring only days to install, the Orion C350 lift is built in Australia, which results in very short lead times. Rated for 350kgs, the Orion C350 can easily carry three people and has a clear floor space of 1200mm x 1400mm x 2100mm.

### Cost Effective

- ▶ Self-supporting lift tower - no load bearing walls required
- ▶ No separate machine room construction required
- ▶ Only 150mm pit depth
- ▶ Low installation / construction costs
- ▶ Low running costs / power consumption
- ▶ Single phase 240v power
- ▶ Bi - Annual maintenance
- ▶ Suitable for internal or external installation

### Safety

- ▶ Reliable dual oil hydraulic chain-over cylinders
- ▶ Emergency lift car lighting - in the event of power failure
- ▶ Automatic battery backup lift car lowering system
- ▶ Additional manual lowering facilities
- ▶ Emergency stop button, alarm and phone
- ▶ Key lockable push button controls
- ▶ Automatic homing of the lift car

### Peace of Mind

- ▶ Manufactured by a family owned and operated company
- ▶ Australian made to Australian Standards
- ▶ Built to superior specifications using quality materials
- ▶ Warranty on parts and labour
- ▶ Lift delivered, installed & tested by qualified lift technicians
- ▶ Custom built to your specification
- ▶ Lift shaft can be finished to match existing architecture
- ▶ Unrivalled after-sales service

### LIFT TOWER

Built as a free-standing, self-supporting unit and weighing approx 950kg, the lift tower is fabricated from aluminium and comes complete with sliding doors, door jambs, flashings, electrical wiring and hydraulic cylinders.

Depending on space and architectural needs, the lift shaft can be set up for cladding to be applied directly to it's framework. The Orion C350 lift tower can be easily incorporated into a new or existing building, whether it be positioned internally or externally.

### LIFT CAR

Available in two styles of configuration:

- ▶ Single entry **"A Model"** with entry and exiting on the same side
- ▶ Dual entry **"B Model"** with entry at the front and exiting via the rear.

Car size is as follows:

- ▶ Both configurations 1200 x 1400 x 2100



### Why buy Australian Made?

- ▶ Built to Australian Standards
- ▶ Confidence in Quality
- ▶ Short lead times
- ▶ Parts readily available
- ▶ Jobs created in Australia
- ▶ Supporting Australian Economy
- ▶ Profits remain in Australia



### LIFT CAR INTERIOR

Standard option is for the fabricated aluminium lift car frame to be internally sheeted with white laminated panels. These panels are removable, thus allowing the cosmetics of the lift to be changed.

Our standard inclusion for the car floor is a grey/charcoal indoor outdoor carpet. If wanted, we can leave the floor bare for the client to fit an alternative floor covering.

Standard car features include:

- ✓ Dual grey or stainless steel control panels with stainless steel buttons
- ✓ Internal controls of GR 1, alarm, emergency stop, door open, door close
- ✓ Engraved load plate
- ✓ Stainless steel handrail
- ✓ Non-slip grey/charcoal indoor outdoor carpet
- ✓ Emergency automatic dialling telephone
- ✓ 4 recessed LED down lights
- ✓ Lift car door

### LANDING DOORS

Fitted with stainless steel sliding doors, the whole assembly is part of the lift shaft.

Swipe card security devices can be added to the landing doors as an optional extra.

Door size is: 900mm wide x 2000mm high.

### LANDING CONTROL STATIONS

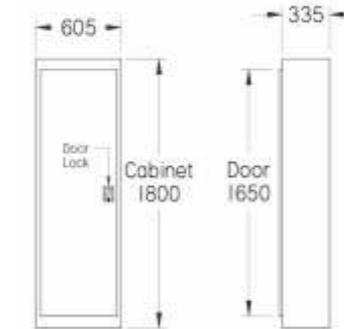
Mounted to the front of the lift and onto a grey or stainless steel plate, the stainless steel buttons are automatic in operation and supplied with braille & tactile.

Under the BCA ruling, any Orion C350 servicing more than two levels will be provided with visual and audible indicators within the lift car and at the landings.

For securing the lift against unwanted users, each station control is fitted with an isolating key switch. Used in conjunction with the parking facility, the lift car will position itself just above the lower landing, preventing either of the landing doors from opening. This command can be overridden at either landing by keying the lift back on.

### MACHINE CABINET

The Orion C350 uses a separate lift machine cabinet that creates a more compact lift shaft design and eliminates costly machine room construction.



Fabricated from metal and powdercoated, to withstand the external elements, the cabinet is mounted at the ground level for easy access for emergency and maintenance purposes.

Provided with a key lockable door, the cabinet contains the hydraulic power unit, hydraulic control valves, electrical control board, emergency power supply, cabinet light, emergency tools and instructions.

### INSTALLATION

Supplied assembled & pretested, the design of the Orion C350 allows for easy installation by either craning in, dismantling or manoeuvring into place. Able to be installed within 3 - 4 days, the Orion C350 is perfect for new or existing buildings as time on site is minimal.

### ELECTRICAL REQUIREMENTS

The Orion C350 only requires a 32amp RCD protected single phase power circuit. The lift mains do not require fire rating so the lift can be fed from a local sub board.

### MAINTENANCE

For optimum performance, reliability and long term use, the lift should be serviced every 6 - 12 months by an approved lift technician.

### WARRANTY

For all warranty enquiries, please check with your local Aussie Lifts

