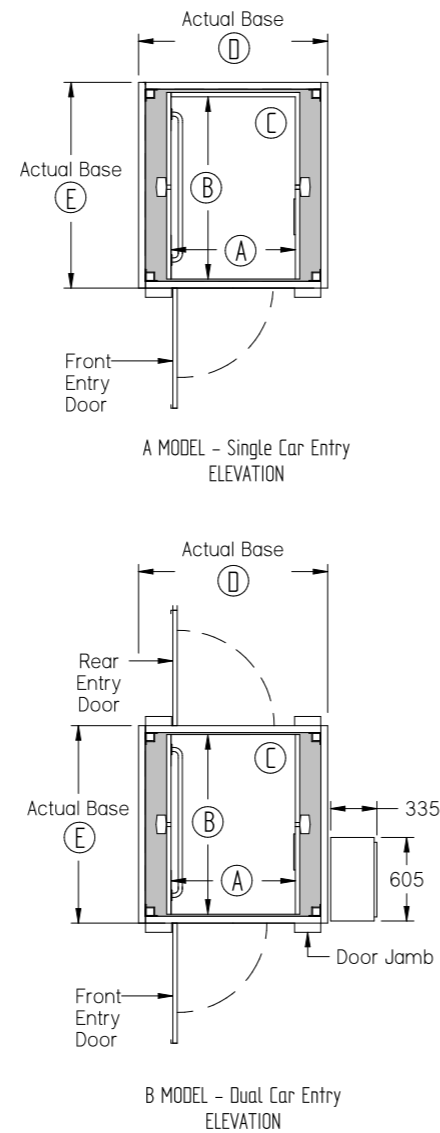
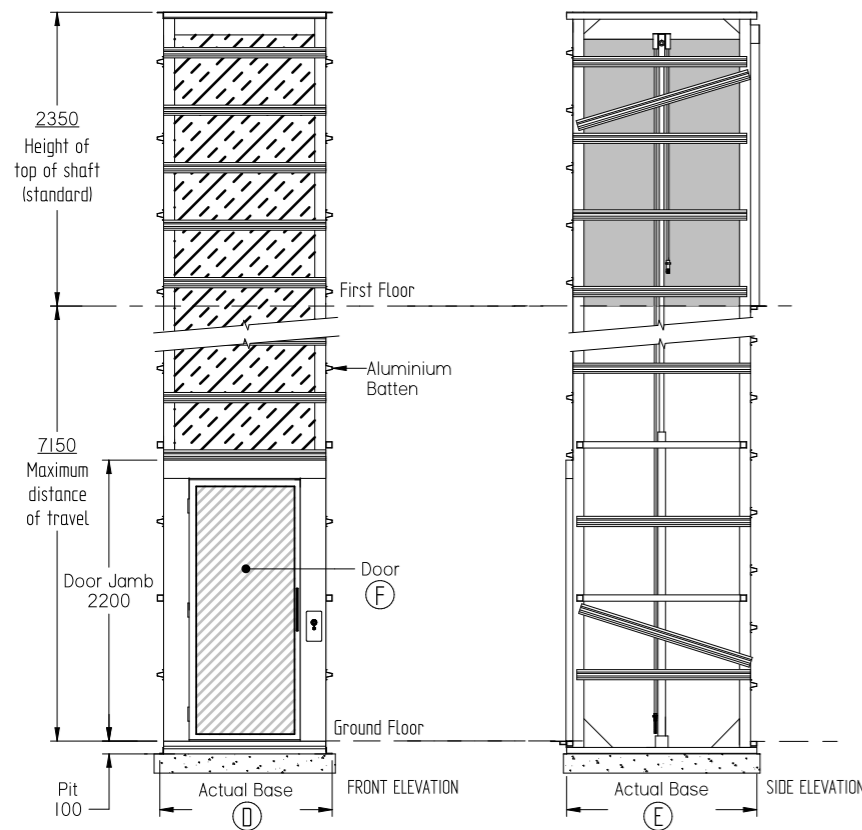


THE PHOENIX



Lift Measurements						
Description	Car Width	Car Depth	Car Height	Shaft Width	Shaft Depth	Door Width
Key	A	B	C	D	E	F
Single Entry - Standard	900	1300	2100	1375	1490	920
Dual Entry - Standard	900	1300	2100	1375	1490	920
Single Entry - Deluxe	1100	1400	2100	1575	1590	920
Dual Entry - Deluxe	1100	1400	2100	1575	1590	920

NOT FOR CONSTRUCTION



RESIDENTIAL



DISABLED USE

THE PHOENIX

Oil Hydraulic Chain Over Residential Lift

MAIN SPECIFICATIONS

- Carrying Capacity:** 350kg
- Car Size:** Standard - 900W x 1300D x 2100Hmm
Deluxe - 1100W x 1400D x 2100Hmm
- Door Sizes:** Standard - 920mm x 2040Hmm
Deluxe - 920 x 2040Hmm
- Maximum Travel:** Up to 7150mm overall
- Lift Speed:** Standard - Rated speed 0.185 m/sec with hydraulic valve stop with an up stop
Enhanced - Rated speed 0.292m/sec using VF drive & increased pump (optional extra)
- Max No. of Stops:** 3 to 4 Stops
- Drive System:** Oil hydraulic chain over with indirect acting cylinders on each side of the lift car. 1:2 ratio
- Minimum Pit Depth:** 100mm
- Cylinder Extension:** Contained within lift tower
- Machine Cabinet:** 605W x 335D x 1800Hmm
- Controls:** Automatic operation & key isolation
- Standards:** Meets or exceeds requirements of the Australian Standards Lift code AS1735 Part 16 & 18
- Usage:** Residential
- Application:** External or internal
- Installation:** Crane in, dismantle or manouevred
- Lift Tower:** Inclusive. Self supporting - no structural walls required. Cladding by others can be attached directly to the lift structure
- Supply Voltage:** 240volt. Single Phase. 20amp RCD protected

Call Us - We're Here to Help
We have an unrivalled reputation for after-sales care and customer service. Call us and one of our friendly lift specialists will gladly answer all your questions.

Aussie Lifts Pty Ltd
12 Achievement Crescent
Acacia Ridge QLD 4110
Tel (07) 3274 4211
info@aussielifts.com.au
www.aussielifts.com.au
A.B.N # 90 618 522 277



Stay in the home you love

aussielifts

Stay in the home you love



REGISTERED PROVIDER



AUSTRALIAN OWNED AND MANUFACTURED

© 2011 by Aussie Lifts Pty Ltd. All Rights Reserved. This brochure is for information purposes only. Information may change without notice. All dimensions and specifications are a guide only and must NOT be used for construction purposes. All changes must be in compliance with the lift code and the manufacturer reserves the right to approve or refuse any changes.

“Full of surprises, the Phoenix offers versatility in size, speed and design for multi-level residential properties. Custom built in Australia, as a free standing unit, the Phoenix has short lead times and eliminates many of the traditional costs associated with luxury lifts”.

Capable of servicing up to four levels, with a maximum travel of 7.150 metres, the Phoenix is powered by an advanced chain-over oil hydraulic drive system that not only pushes the boundaries of residential lift performance, but also dramatically reduces pit and overhead height requirement - especially important with height restriction.

Supplied as a complete free-standing unit with its own self supporting tower, doors, hydraulics and pump, the Phoenix provides flexibility in speed, weight capacity, size and finishes.

Eliminating the huge expense of building conventional lift towers, the Phoenix requires no load bearing walls and is easy to install.

With a lift capacity of 350kg, the Phoenix can easily carry two people (including a wheelchair) at an average lift speed of 0.185 m/sec or up to 0.292 m/sec if the enhanced package is selected.

STANDARD SAFETY FEATURES

Supplied with an impressive list of standard safety features, the Phoenix offers peace of mind with it's in-car emergency telephone, infra-red door sensors, emergency battery back up lowering system and lighting. On top of that, the Phoenix has a very easy to use manual lowering valve, should the lift car ever need to be lowered.

CHAIN-OVER OIL HYDRAULICS

Providing a gentle and reliable ride, the Phoenix uses an advanced chain-over 1:2 drive system with indirect acting oil hydraulic cylinders on both sides of the lift car.

Unique for a residential lift, the Phoenix offers reduced alteration on construction costs normally associated with fitting a lift into a new or existing home. This is because the Phoenix requires no overhead space and only a 100mm pit.

Optional feature - For improved floor levelling accuracy and smoother lift operation, the addition of a VVVF drive to the hydraulic pump motor gives the lift the performance commonly found only on high end residential lift control systems.

If you would like the option of faster travel between floors, we offer an enhanced package to our clients. The package includes an increased pump and VF drive.

Cost Effective

- ▶ Self supporting lift tower - no load bearing walls required
- ▶ No separate machine room construction required
- ▶ Low installation/home construction costs
- ▶ Low running costs/power consumption
- ▶ Single phase 240v power
- ▶ Once a year maintenance
- ▶ Internal or external installation

Safety

- ▶ Reliable oil hydraulic chain-over
- ▶ Emergency battery backup lowering system & lighting
- ▶ Additional manual lowering facilities
- ▶ Internal phone
- ▶ Emergency stop function
- ▶ Light curtain across the entrance
- ▶ Key lockable push button controls

Peace of Mind

- ▶ Manufactured by a family owned and operated company
- ▶ Australian made to Australian Standards
- ▶ Built to superior specifications using quality materials
- ▶ Warranty on parts and labour
- ▶ Lift delivered, installed & tested by our technicians
- ▶ Custom built to your specification
- ▶ Lift tower can be finished to match home decor
- ▶ Unrivalled after-sales service

LIFT TOWER

Built as a free-standing, self-supporting unit and weighing approx 750kg, the lift tower is fabricated from aluminium and comes complete with doors, door frames, flashings, electrical wiring and hydraulic cylinders.

To eliminate the need for a secondary door on the lift car, the section of shaft between the two landings is fitted internally with panelling to create a flush running surface.

Depending on space & architectural needs, the lift shaft can be set up for cladding to be applied directly to it's framework. The Phoenix lift tower can be easily incorporated into a new or existing home, whether it be positioned internally or externally.

LIFT CAR

Available in two styles of configuration:

- ▶ Single entry "A Model" with entry and exiting on the same side
- ▶ Dual entry "B Model" with entry at the front and exiting via the rear.

Lift cars can be individually built to the customer's requirements - up to a maximum floor space of 1.6m².

Lift car sizes are as follows:

- ✓ **STANDARD MODEL** W: 900mm x D: 1300mm x H: 2100mm
- ✓ **DELUXE MODEL** W: 1100mm x D: 1400mm x H: 2100mm



Why buy Australian Made?

- ▶ Built to Australian Standards
- ▶ Confidence in Quality
- ▶ Short lead times
- ▶ Parts readily available
- ▶ Jobs created in Australia
- ▶ Supporting Australian Economy



LIFT CAR INTERIOR

Fabricated from aluminium, the frame of the lift car, walls and ceiling is lined with a series of laminate panels with shadow lines.

Standard car features include:

- ✓ Internal controls for each levels, and emergency stop
- ✓ Stainless steel handrail
- ✓ Non-slip grey indoor outdoor carpet
- ✓ Emergency telephone
- ✓ 2-4 recessed LED down lights
- ✓ Light rays across the door entrance

Option of different panels.

LANDING DOORS

Fitted with swing action doors with a mechanical lock, adjustable automatic door closer and electrical interlock, the whole assembly is part of the lift shaft.

Door styles include:

- ✓ Translucent glass door as standard

Optional extras:

- ✓ Patterned door from the Corinthian & Hume internal range
- ✓ Metal door with optional glass view panel
- ✓ Redicote flush door with optional glass view panel

To assist in the operation of the doors, automatic door operators or sensory operation can be fitted to the landing doors as an optional extra.

Door size for lift car: 920mm wide x 2040mm high.

Lift can be supplied with 2340mm high doors.

STATIONS

Mounted to the front of the lift and onto your choice of a grey or stainless steel panel to enable you to call the lift from each landing.

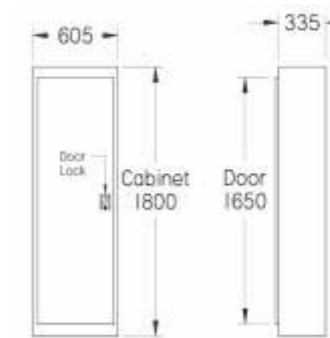
To eliminate the possibility of the lift car being called by another user on arrival, the Phoenix is fitted with a 5 second non-reversal timer.

MACHINE CABINET

The Phoenix uses a separate lift machine cabinet that creates a more compact lift design and eliminates costly machine room construction.

Fabricated from metal, and powdercoated, to withstand the external elements, the cabinet is mounted at the ground level for easy access for emergency and maintenance purposes.

Provided with a key lockable door, the cabinet contains the hydraulic power unit, oil tank, hydraulic control valves, electrical control board, emergency power supply, cabinet light, emergency tools and instructions.



INSTALLATION

Supplied, assembled & pretested, the design of the Phoenix allows for easy installation by either craning in, dismantling or manoeuvring into place.

Able to be installed within 3 - 4 days, the Phoenix is perfect for new or existing homes as the time on site is minimal.

ELECTRICAL REQUIREMENTS

The standard, enhanced and deluxe models all have the same economical power requirements.

- ▶ 240volt. Single Phase. 20amp RCD protected
- ▶ Active analogue compatible telephone line

MAINTENANCE

For optimum performance, reliability and long term use, the lift should be serviced every 12 months by an approved lift technician.

WARRANTY

For all warranty enquiries, please check with your local Aussie Lifts dealer.

